

Little EGG Gallery

2025 Rental Package



Small text caption below the left artwork.



Small text caption below the right artwork.



About Little EGG

Since our inception in 2022, Little EGG has exhibited over 1200 artwork and +350 artists from all around the world. Our mission is to become the global venue to celebrate the next generation of contemporary artists.

Little EGG has financially supported underprivileged artists from Ukraine, Uganda and Israel to allow them to exhibit their artwork in our shows. We also partner with local mental health organizations.

The gallery has been featured on Hyperallergic, Reader's Digest, Artsy, CBC TV, The Art Newspaper, Toronto Star & TLN TV.

We host shows in Toronto & NYC. Our permanent space is located in Toronto, Canada.



Previous Shows





- 1000 Sq Ft for the Upper and Main floor galleries.
- 100 ft wall space for the Upper and Main floor galleries.
- +100 person capacity
- No installation required, gallery quality rail hanging hardware system
- Museums quality Artwork Tags
- One Letter size decal sign
- One 4ft Table

Gallery Features

Previous Shows





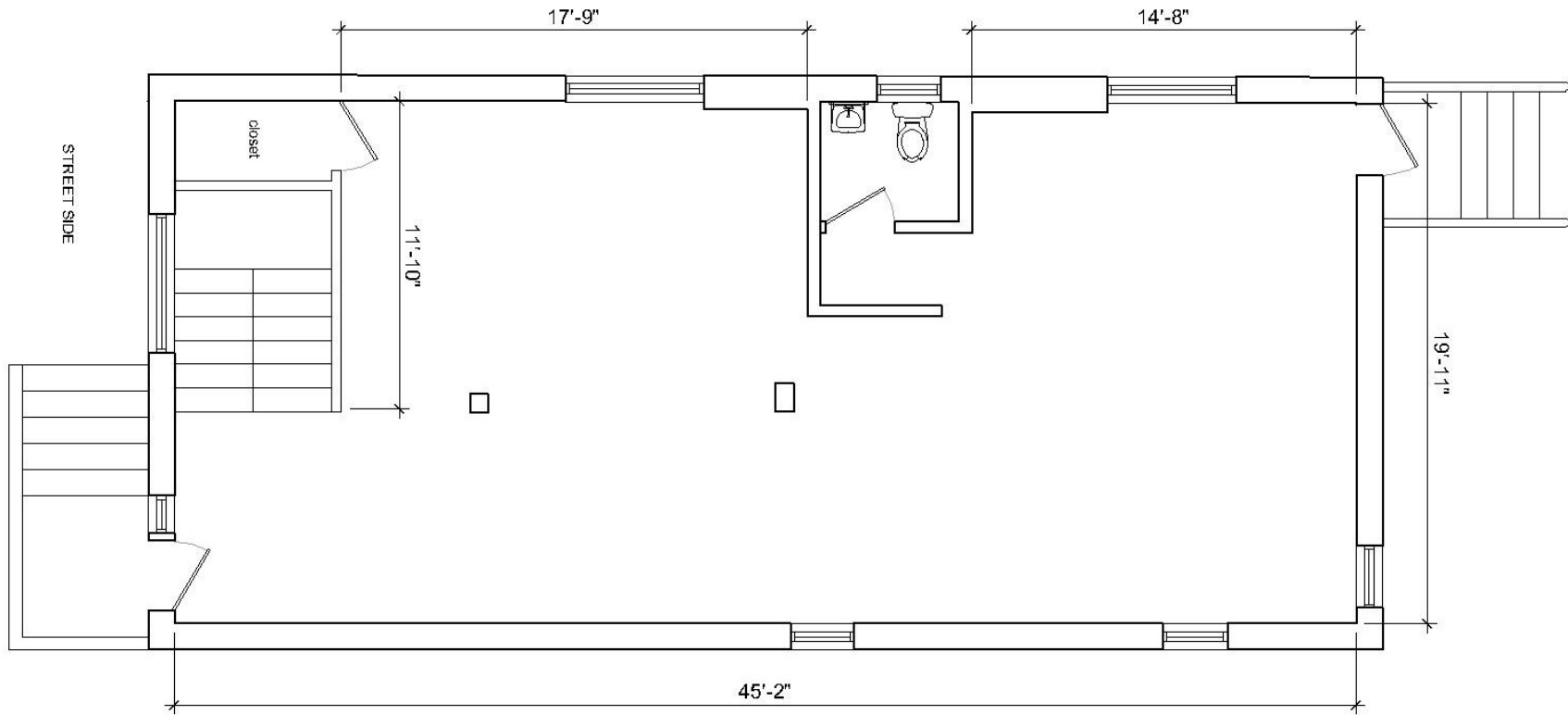
Show Promotion

- Exhibition and Artist profile on our **Artsy Page**
- Exhibition listing on our **Now Toronto** gallery account
- Exhibition profile on our **website**
- Exhibition listing on **To do Canada**
- Exhibition listing on **Blog TO**
- **Instagram** and Facebook posts
- **Newsletter** promotion



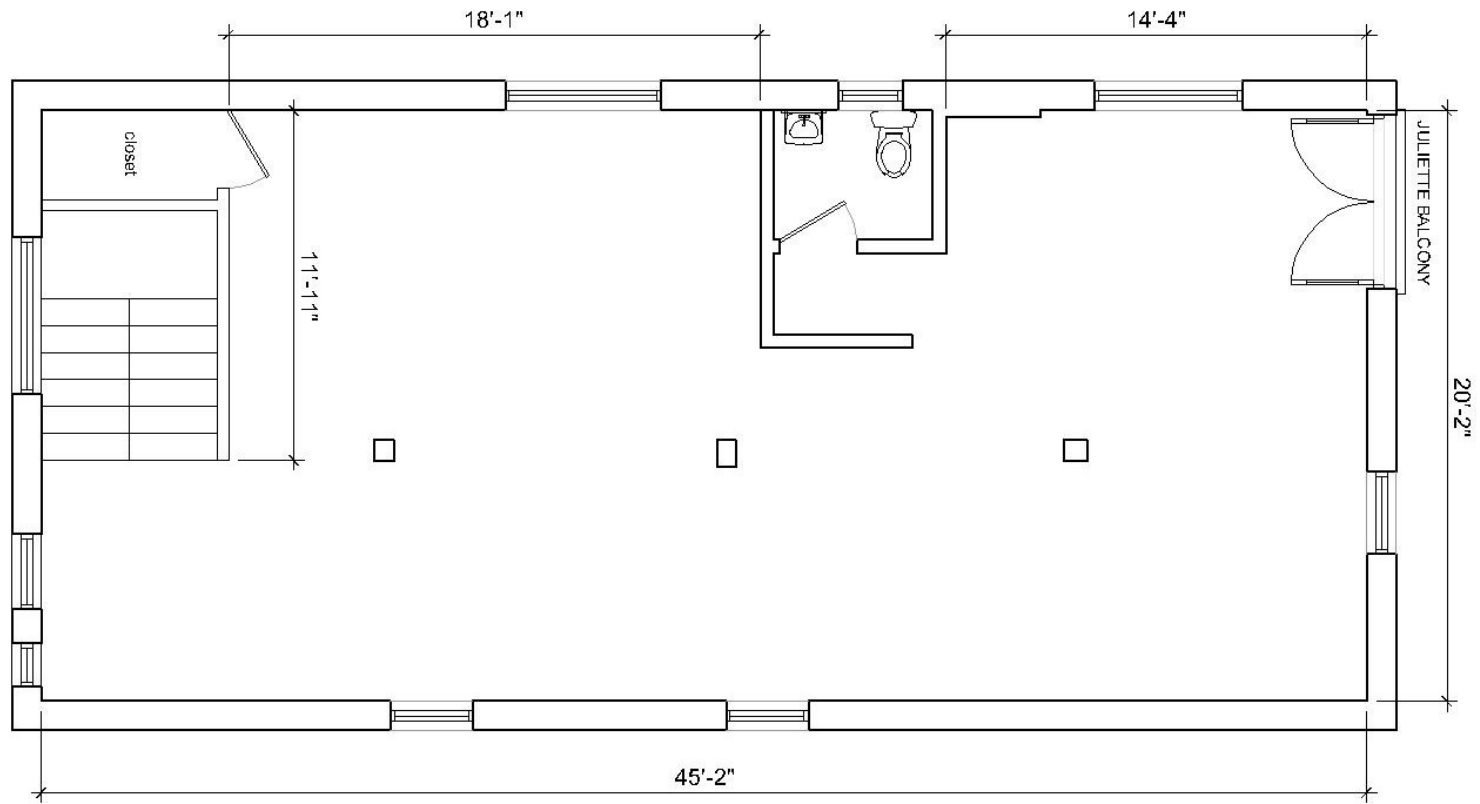


Main Floor Gallery Floor plan

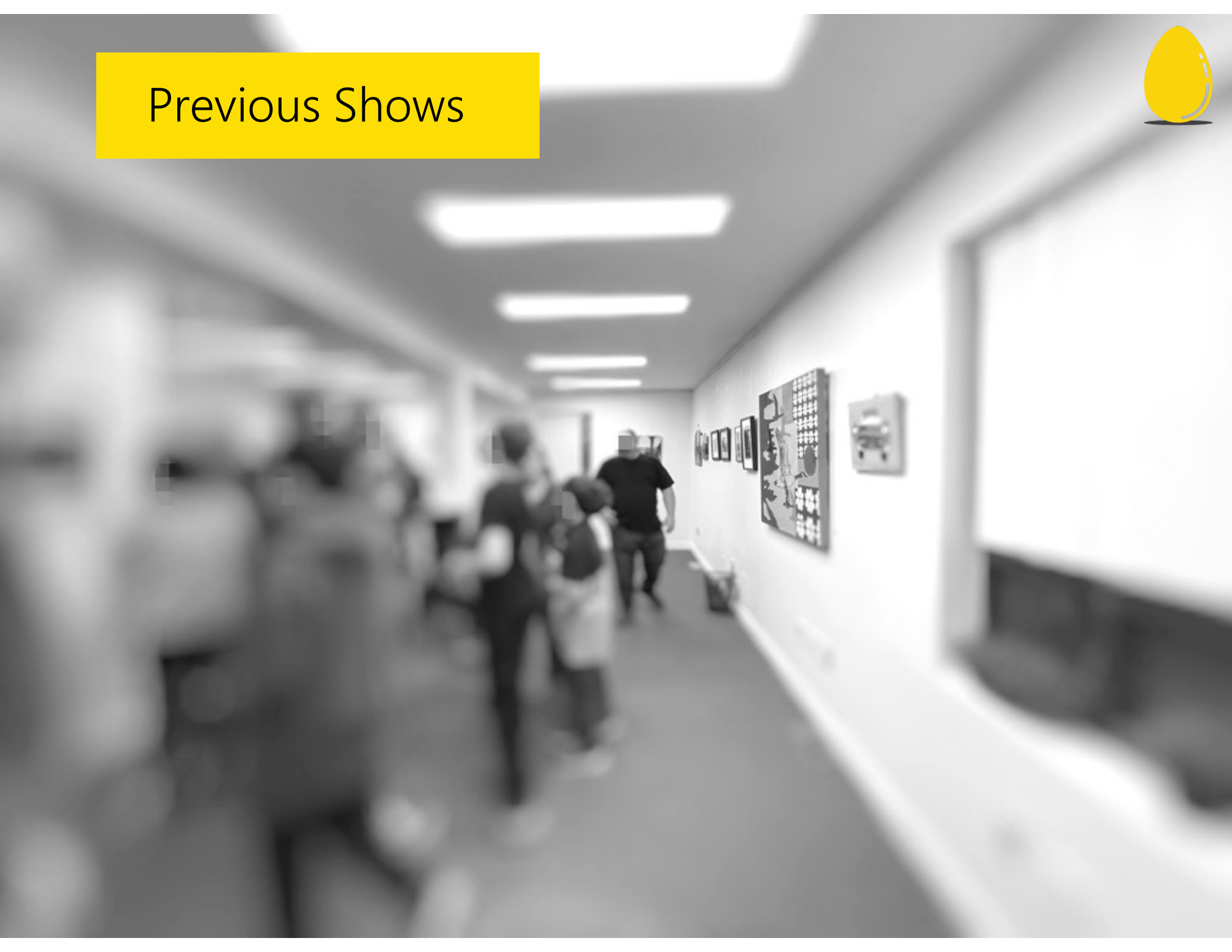




Upper Gallery Floor plan



Previous Shows



Rental Fees

Main Floor Gallery

(1000 sq ft and 100 ft linear wall space)

\$650 / Week

\$220 / Day

Upper Floor Gallery

(1000 sq ft and 100 ft linear wall space)

\$600 / Week

\$200 / Day

Attendant Fee

\$20 per hour



Q & A

Q: Does the gallery take commission?

A: No! Exhibitors handle sales themselves and we don't take commission on any sold work.

Q: How do we install the artwork?

A: You don't need to use screws or nails to set up your show! We have a rail hanging system that makes set-up a breeze.

Q: Can we use stick on signs for the show?

A: The gallery will handle artwork tags as well as 1 letter size decal sign for the show.

Q: Can we serve food and drinks at the show?

A: Food and drinks are permitted at the show. There is no food prep facility available. The gallery does not have a liquor license.

Q: Are set up/take down days part of the rented days?

A: Yes, you can enter the space at 12 pm on the first day and leave the space by 12 pm on the last day.

Q: Will there be a galley representative at all times?

A: No. The gallery will be open by appointment on our website and the artist is responsible for showing the visitors in. A gallery attendant will be available for the chosen opening reception date and on Saturdays between 12 pm – 4 pm.